

Introducing Reflect Emotion Board

Create space for emotions in your classroom - literally!



The Emotion Board is a Social-Emotional Learning (SEL) activity your students will love. It is a physical board that adapts Reflect for classrooms with young students or without student devices.

Once the board is set up, students can share how they feel during a lesson, every morning, or at the end of each day by placing their card in the emotional category they relate to. When students are done, capture their responses using the Reflect app on your mobile device to collect responses and gain valuable insights into their well-being.



Affordable

A ready-to-use kit that you can print at school



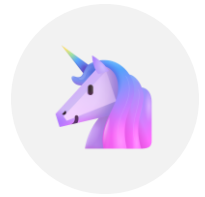
Time saver

One-time setup for simple daily use



Device free

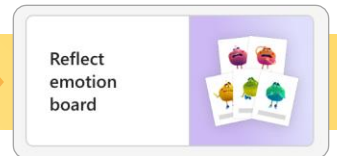
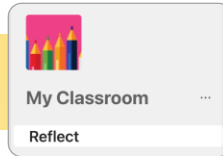
Only an educator device is required



Accessible

For younger users and those with disabilities

Ready to Reflect with the Emotion Board?
Navigate to the Reflect app in your class team.



Building an Emotion Board made easy: simple and creative ideas for every classroom



Get started with the Emotion Board

Available in English for:

Reflect in Microsoft Teams

Reflect web (coming soon)

One-time setup

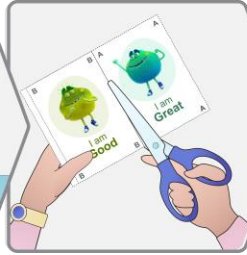
Build an emotion board in your classroom



Download the board kit from Reflect app



Print the emotion and animal pages



Cut the cards along the marked lines

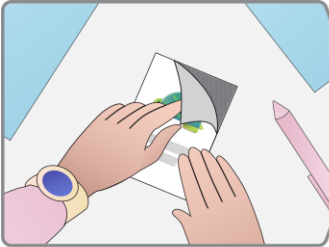


Arrange the emotion cards on a board or wall

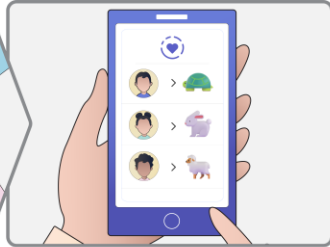


The emotion board is all set up

Assign a card to each of your students



Prepare the animal cards by using Velcro, magnets, etc..



Review and assign the animal images to your students



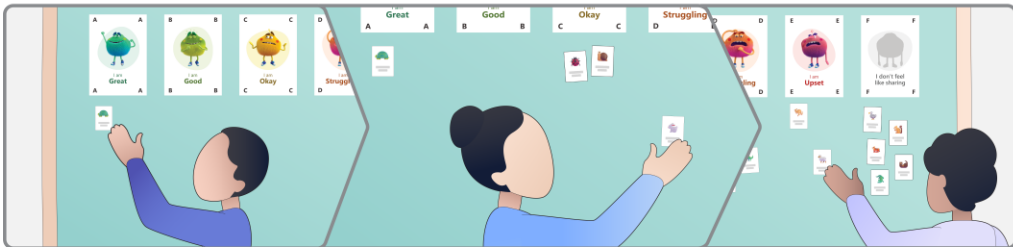
Hand an animal card to each student



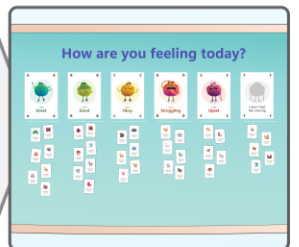
Your students are ready to share their emotions

Ongoing use

Students share their emotions

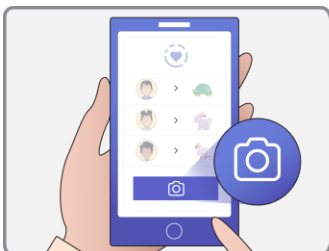


Have students place their assigned cards on the board to reflect how they feel

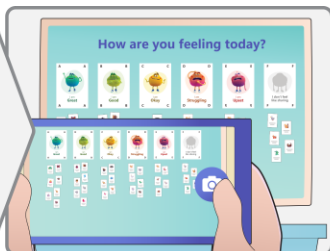


The emotion board is ready to be scanned

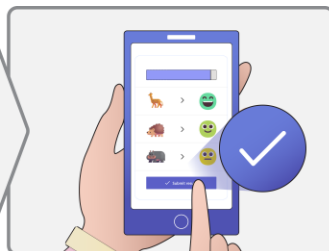
Scan the board with your device to gain insights



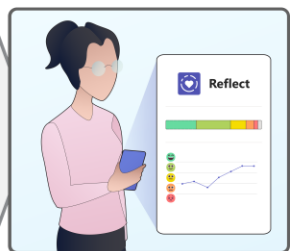
Navigate to Reflect app in your device to collect responses



Capture a clear picture of the board, ensure card visibility



Confirm the scanning results



Explore trends and gain insights